

Beyond Green

HIDDEN EXPERIENCES

BUNGALOW, AHMEDABAD

 RECIPIENT OF
2017 ISOLA GENERAL DESIGN AWARD





Landscape design for a contemporary bungalow in Ahmedabad is a garden whose purpose is to convey the beauty of nature and its rhythms to the young couple-client who stay with parents and two children. The bungalow with its ground hugging structure, hand-dressed stone walls, exposed concrete and large openings were the perfect setting for this landscape, which was visible but had nuances of mystery as one took the walk.

Concept

The garden is a sequence of intimate outdoor rooms, each with its own identity and experience. As one passes through each threshold in the composition, there is a sense of mystery and surprise as the spaces and their individual design features are sequentially revealed.

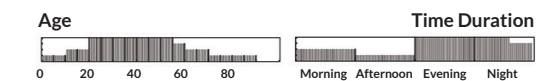
The landscape was designed to encourage guests to slow down, linger and rejuvenate themselves, following the footpath in Kota stone that holds the swath of lawn that leads to various destinations. An old tree trunk between two existing trees became the focal point of the landscape. There were layers in planting both within time frame and also in terms of foliage and flowers that respond to seasonal changes. Plants near the water body respond to subtle changes in light and wind, capturing the grand gestures of changing seasons. The entire landscape is a series of smaller personalized gardens which are woven into one large space.

- *My Court*: Explores the idea of a swing amidst fragrant shrubs.
- *Vegetable Sit-out*: Pavilion which is surrounded by vegetables and connected to a breakfast deck.
- *Wadi Sit-out*: Fruit pavilion within a fruit orchard (having mango, chickoo, pomegranate and many more), with built-in furniture and a mist garden.
- *Puddle Court*: Small deck amidst a lotus pond which is the holding pond for rain water recharge.
- *Sunken Garden*: Small bunk garden below a mango tree with bird bath
- *Pool Court*: Slice of pool conceived as a step well and the water pavilion at its axis.
- *Entrance Plaza*: A mosaic of stone and gravel to ensure that no surface is felt like a large monolithic floor plate.

← View from the lawn looking towards the bungalow and the golden bottle brush trees provide the perfect swaying character next to the Puddle Court.

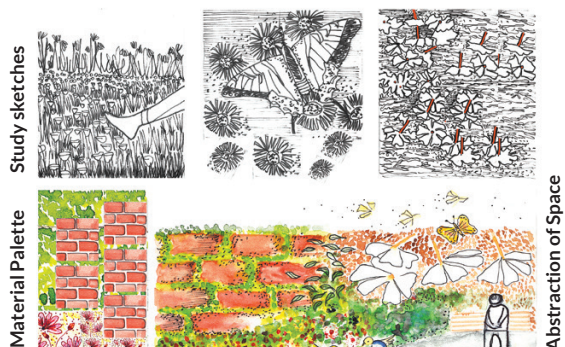
MY COURT

Design Intent: A space for myself to spend alone



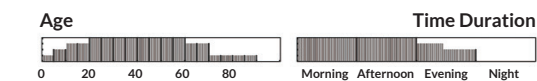
Design Approach

Hidden Court
Moss on Brick
Patterns on walkway
Green Enclosure
Sculpture Seating
Warm and cosy area



PUDDLE COURT

Design Intent: A sunken space which connects one to Water and sky



Design Approach

Sunken lily pond with aquatic plants around
Connection between water and sky
Deck to go to the pond



WADI SIT OUT

A fruit pavilion within a fruit orchard having mango, chickoo, pomegranate and many more, with built in furniture and mist garden

SUNKEN GARDEN

Small bunk garden below a mango tree with bird bath

PUDDLE COURT

A small deck amidst a lotus pond which is the holding pond for rain water recharge

MY COURT

Which explores the idea of a swing amidst fragrant shrubs



POOL COURT
Slice of pool and the water pavilion at its axis

ENTRANCE TO WADI
Small plaza as resting space

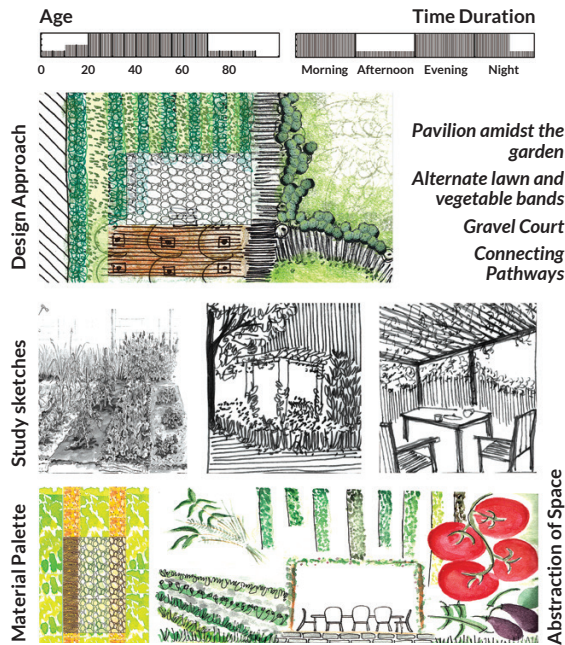
PARTY LAWN
A central open lawn which could be used for small gatherings and functions

VEGETABLE SIT OUT
A pavilion which is surrounded by vegetables and connected to breakfast deck

ENTRANCE PLAZA
A mosaic of stone and gravel to ensure that no surfaces are felt like large monolithic floor plates

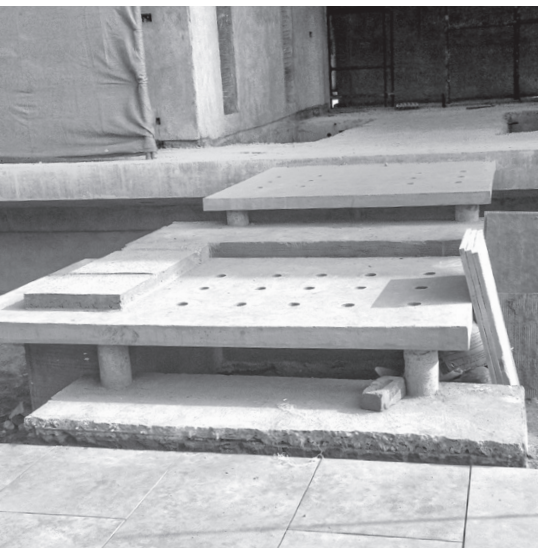
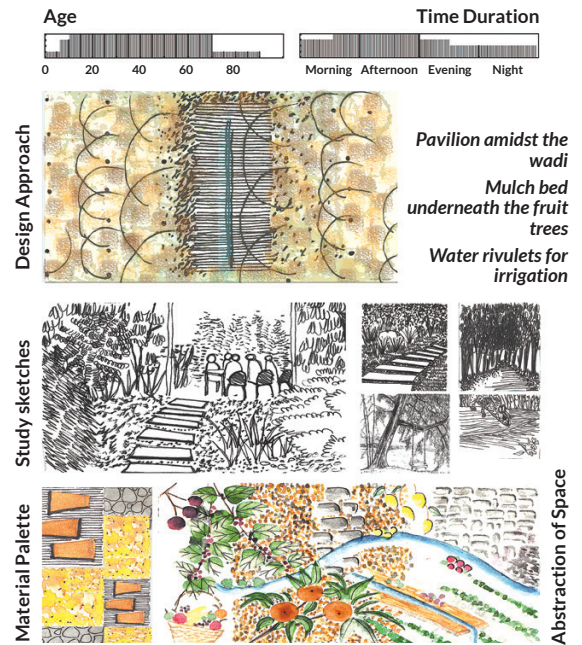
VEGETABLE PAVILION

Design Intent: A space for the family amidst fresh vegetables and tea grasses which would connect them with the nature.



WADI SIT-OUT

Design Intent: A space for the family to relish fruits



UNDER CONSTRUCTION IMAGES

- ↑ Floating step platform connecting the bungalow and 'My Court'
- View of the Puddle Court and the Party Lawn from Upper Gallery
- Walkway flooring work and Bauhinia flowering

Local materials like river-washed brown Kota, exposed brick flooring which allows seasonal variation, exposed concrete tables with handpicked furniture like copper vessel for bird bath, an old Sankheda swing in 'My Court', customized light fittings like reed lights, tree hanging lights are a few elements of the landscape design. The landscape space is intimate in character, more for enjoying with family and friends rather than larger social gatherings—a space for hidden experiences like a series of woven beads, each with its own identity but still homogeneously connected with others.



← View from the gallery overlooking the expanse of landscape with the fruit orchard and the lounge at a distance.

← With gabion columns, metal truss and misters within it, the fruit pavilion is an element of surprise and is seen only as one enters the wadi

↙ Connection from bungalow to 'My Court'.

↓ Laminar jets along the steps adds the sound character to the space and along with lighting at night is what is the focal element as one takes a walk along the complete edge of the landscape.

Project & Location

Bungalow at Ahmedabad

Site Area

10,900 sq.mts

Landscape Area

9,300 sq.mts

Client

Dhiren Vora

Promoter, M/s HN Safal, Ahmedabad

Landscape Architects

Bobby Sujansingani and Rucha Nangare, Beyond Green, Ahmedabad

Architect

Blocher Partners, Stuttgart

Contractor

Kautuk Ruwala, Ahmedabad

Pool Vendor

Shail Sheth, Blue Lagoon, Ahmedabad

Text, plan and images by Beyond Green

