

CONTEMPORARY FACADES

TOP INDIAN OFFICES, RETAIL, SCHOOLS AND HOSPITALITY
EXTERIORS + INTERIORS



IAG
INTERIOR ARCHITECTURE GROUP



Client: Levana Hospitality LLP / Project Location: Lucknow, Uttar Pradesh, India / Built up Area: 3000 sq.mtr

Photography Courtesy: Photographic | Sebastian + Ina
 Principal Architects: Beyond Green, Ahmedabad and Sangi (Architecture, Landscaping and Lighting design) & Hiral Jobalia Studio, Mumbai (Interiors and Interior Lighting design)
 Other Consultant: Design Group, Lucknow (Structural Consultant) & Depayr Advertising Pvt. Ltd., Mumbai (Project Graphics and Creative)



Beyond Green
 Locations: Ahmedabad, Gujarat, India
 Sangi, Maharashtra, India
 Website: www.beyondgreen.in
 Designer in charge: Joboy Sujarisingni & Rucha Nargore
 Design Team: Sagar Prajapat



Hiral Jobalia Studio
 Location: Mumbai, Maharashtra, India
 Website: www.hiraljobalia.com
 Designer in charge: Hiral Jobalia
 Design Team: Parik Mantia

COMPANY PROFILE

Under the leadership of Mr. Hiral Jobalia, the studio was established on the principles of continuous exploration and logical clarity. A boutique sized firm, H.J. Studio has a broad and varied experience in modern home interiors, private residential homes and commercial projects across India which articulates into catering to a mixed set of clients. H.J. Studio follows a step program, which starts with the clients' brief, innovativeness in both design and exploration of materials, conductivity and budgets are carefully resolved and refined in a poetic solution that seeks to engage human perception. This results in sensually sculpted designs that speak of intimacy and identity all at once. The deep expertise of the studio is translated into each design they undertake, making their projects stand out.

COMPANY PROFILE

Established in the year 2011 by Mr. Joboy Sujarisingni and Ms. Rucha Nargore, Beyond Green provides a spectrum of services. Their primary objective is to make the design process itself enjoyable for the clients. The firm consists of young and enthusiastic people with creative design ideas who are also connected to academics in various formats. The studio is a free environment place for brainstorming sessions. It is always open to the students for their interaction and referencing. Designing for them is forming of relationships and creating balance between the intricacy of Architecture, Landscape and the use. The office has won A'101 in Concrete Asia 2015-2016 for best Residential and Commercial Landscapes and three awards in 2018-2019 for best Residential and Commercial Landscapes and most prestigious Design Award- SCIA General Design Category Award of Excellence 2019.



Hotel Levana Suites

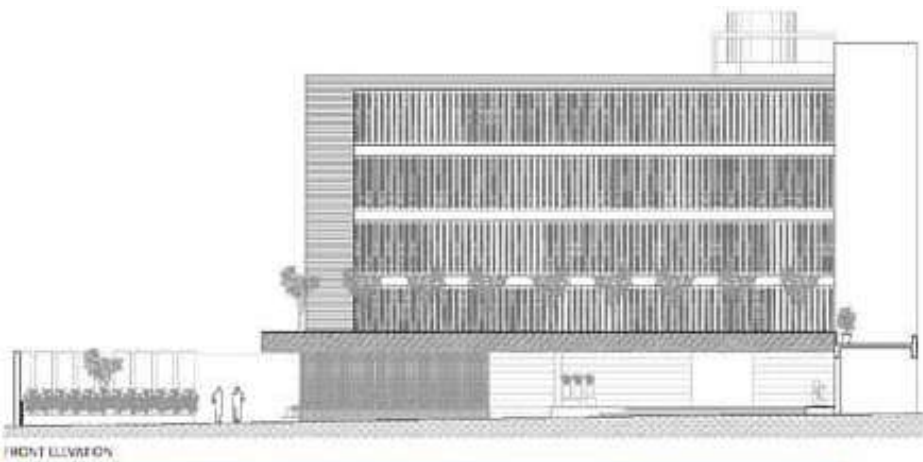
The idea behind the facade was to explore the stories behind the local 'kisan' users in stitching patterns which translates into the art work—the story of the fabric of the hotel.

OVERVIEW

Essentially the brief dictated a refurbishment project where the skeleton framework of the commercial building was used intact and converted to a boutique hotel. The existing commercial building had more of a box character which was in contrast to the end user then. The aim was to change the box like character of the facade whilst maintaining the comfort of the users. For this, the initial planning involved the facade to be divided into three large floor plates a most like four rectangular boxes stacked in the one over the other. The lift was then vertical louvers which connected the two floor plates. The intent was to convert the large facade of the hotel into sun shading devices with louvers, further to break the monotony of large surfaces of louvers they were split into three equal parts each oriented differently in reference to the interior of the rooms and the glimpses of partial covered sky landscape which one could frame. This in turn created soft shadows and made the hotel facade feel like an original structure. The facade being in the city of New Delhi had to be like a 'GLOW BOX' where the fenestrations allowed that permeability of light both of which were used in facade and also from the rooms creating an awe factor.



The flourishing large tree in the corner seeded the idea of creating graphical metal versions which have been installed against the facade clad compound wall.



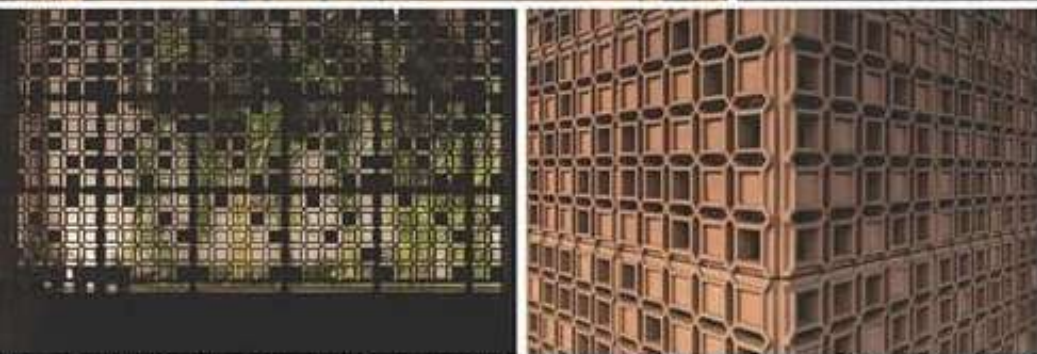
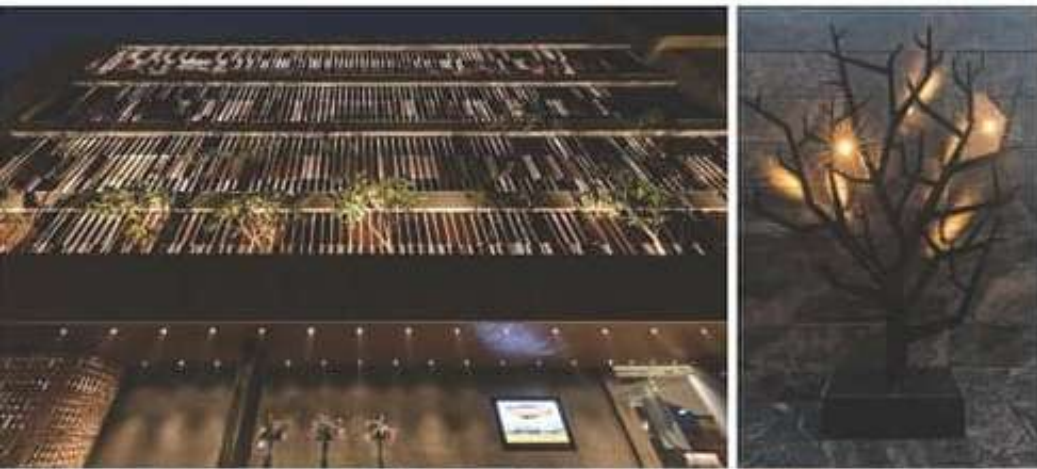
The permeable, seasonal treatment allows light from the facade and internal spaces to spill out, creating a delicately-washed light box effect, so fitting for the City of Neoms.

The building seems to be floating when seen from neighboring areas.

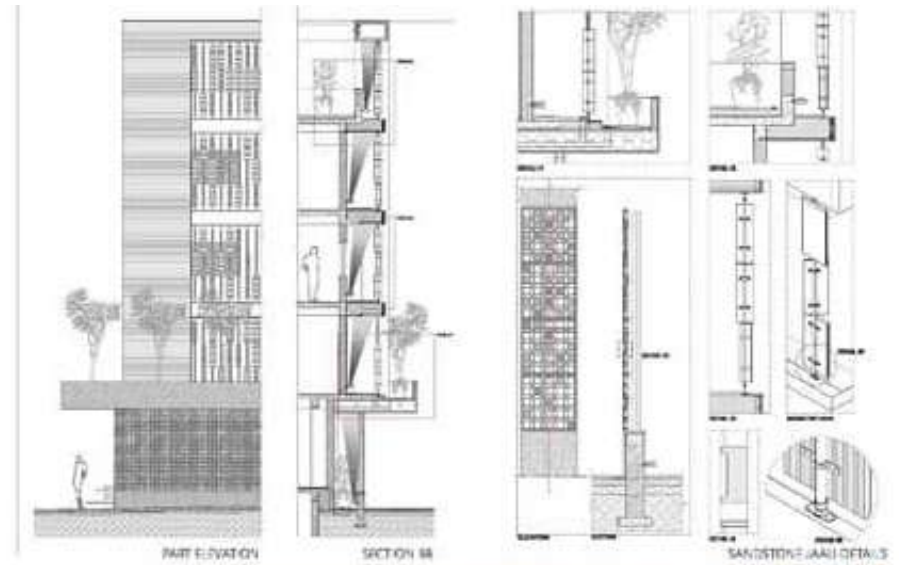


The contrasting trees, one metal, other natural, at two different planes as one sees from the existing trees towards the main gate.





The slats seen in schedule as one stands at entrance plaza and walk towards the hotel, the light fixtures also add another dimension to the facade. The metal trees also function as a lighting installation. The copper inset fittings it up the driveway, while others with magnifying glasses create virtual leaves for the MG trees at night. The delicate sandstone filigree which has been inspired by an kan embroidery allows the facade to stand out, varying the thickness engendered an interesting and design and perforated effect. The Red Sandstone wall coated for different thickness forms one of the main features of the facade design.



PART ELEVATION

SECTION 14

SANDSTONE WALL DETAILS



The coupe restaurant is a blend of contemporary and neo-classical elements and patterns at the rear back adding a value to the space.



The ceiling of the reception desk area sees delicately folded, silver-painted metal in matte finish. The wall adjacent to the door to the guest room is clad in veneer that is etched with undulating lines that echo the pattern of carpet with signage hanging along the wall. The guest rooms are spacious, almost suite-like, therefore the name of hotel. The semi-circular wall with the red carpet ceiling creates a sense of mystery because of its undulating shape.

The corridors on the guest floor are carefully designed with attention to detail.



Wellness connects the cubicles having different seating composition leading towards guest screen. The elevated silent DJ Gallery fits with its changing colors indicates the music which is at its peak.





The cubicles, with bamboo screening, are set against the vast expanse of sky as its background.



Private cubical with fence and the up-ill bamboo create a sense of green enclosure.



GROUND FLOOR PLAN



TERRACE FLOOR PLAN

LEGENDS

GROUND FLOOR PLAN

1. MAIN ENTRANCE
2. ARRIVAL PLAZA
3. STONE JAALI WITH LIGHTS
4. ENTRANCE COVER WITH FLORAL DISPLAY LIGHT
5. SCULPTURE
6. THEME WALL WITH LIGHT
7. METAL TREE INSTALLATION WITH LIGHT FIXTURES
8. CAR WASHING
9. DRIVING TREE
10. RECEPTION AND LOBBY
11. RESTAURANT
12. SALON ENTRANCE
13. BAR WITH PRIVATE DINING

14. OPEN KITCHEN
15. LIFT LOBBY
16. STORE
17. PANTRY & CHILLER ROOM
18. ROOM SERVICE
19. PANTRY
20. MAIN STORE
21. LIFT BLOCK
22. WASH ROOMS

TERRACE FLOOR PLAN

1. LIFT LOBBY
2. BOOK CASE
3. INDOOR BAR
4. ENTRANCE TO THE TERRACE
5. THEME WALL WITH LOUVER
6. SEATING POINT
7. THEMATIC PLANTING
8. CABINETS WITH DIFFERENT SEATING LOGGERS
9. OPEN SEATING WITH PROJECTION SCREEN
10. OUTDOOR BAR
11. STAIRCASE TO LEVEL 2 BELOW
12. D. BOX ABOVE
13. METAL SCREENING WITH PLANTER

Materials

Flooring: Pessello Granite with Honed, Blue and Mirror polish finishes
 Wall Cladding: Dioron on Hotel facade at Ground Floor, Saver Marble
 Honed Black French Brown Italian Marble
 Wall: Red Agis Sandstone
 First Floor: Top wood natural fibre composites with M.S. Frame Structure
 Light Fixtures: Mostly customised and Guzzini, Italy
 Furniture/Floor: Mostly customised
 Other: Tree art sculpture M.S. Customised with Automobile paint and integrated lighting with night lighting lens